



CELEBRATING TEN YEARS!

How time flies; it's hard to believe that ten years have now passed since, with considerable trepidation, we opened Marine House at Beer in 1998. Would a gallery tucked away in a remote Devon fishing village ever be found? Happily the answer was yes and our good fortune in encouraging some fine local artists to risk showing their work laid the foundation for the future. That future has seen the opening of Steam Gallery six years ago to allow us to present a wider range of work between the two galleries and in particular develop the reputation for glass and sculptural ceramics that Steam Gallery has acquired.

Many of our founding artists are still central to the success of Marine House. Special mention should go to Michael Morgan RI who was intrigued by what he saw as "the sheer audacity" of trying to

be serious about a gallery in Beer. We hope that we have repaid his faith. We also "unearthed" Andrew Coates who, following almost celebrity status in his early years in New Zealand, commanded a strong following in London in the eighties before moving to Beer and immersing himself in family and Victorian house restoration.

Other founder members include well known local artists Tina Morgan and Robert Freame, glass maker Sidy Langley, wood turner Robert Parker and potters Steve Harrison and Nick Hillyard.

Since those early days we have built a long term relationship with many artists and craftsmen and, most importantly, customers. Thank you all for your support. We look forward to continuing our many friendships over the next ten years.



1. Andrew Coates

3. Tina Morgan

5. Nick Hillyard

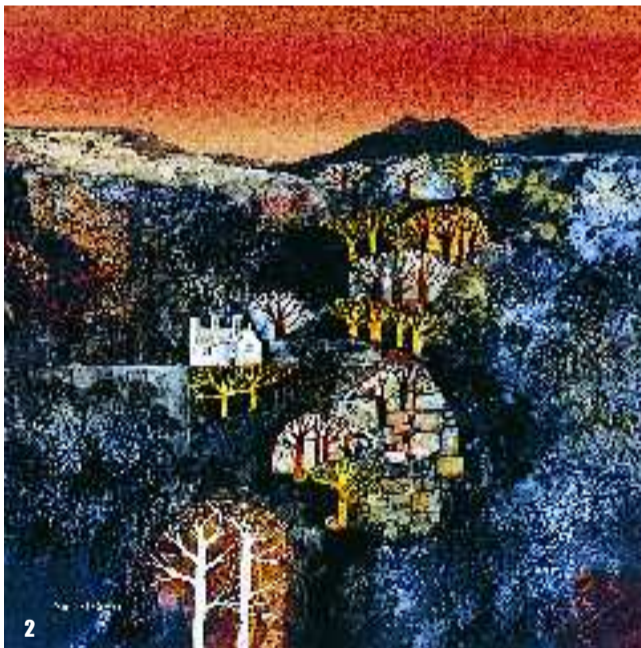
7. Sidy Langley

2. Michael Morgan

4. Robert Freame

6. Steve Harrison

8. Robert Parker



own art

Own Art from the Arts Council, makes it easy to acquire contemporary art and craft. Borrow up to £2,000 and pay back the loan in 10 monthly instalments - interest free.

Own Art is available from Marine House at Beer and Steam Gallery

NEW STUDIO BRINGS FRESH LIGHT TO MIKE'S SHOW

Di Bowerman, Senior reporter on the Sidmouth Herald and art correspondent for The Sidmouth Views talks with Mike Bernard at his new home in Devon.

He may have had three other solo shows at Marine House at Beer, but there will be something very special about the 40 to 50 new paintings Mike Bernard RI will bring to his fourth in September 2008.

All will have been created in a whitewashed 15 by 30 foot arched former cart shed that Mike is having converted into a studio. And not just any studio, but the first purpose-built one he has owned "complete with toilet and central heating" since he finished his post-graduate studies at the Royal Academy School in London 25 years ago.

When he and wife Sue moved from Petersfield in Hampshire to an isolated farm near Combe Martin in North Devon nearly a year ago, one of Mike's first priorities was to build a studio.

He said: "Even though we lived in a barn conversion before I've never had a proper studio. All my previous work was done in a room in the house so I am looking forward to moving in. It even has a Belfast sink for cleaning brushes!"

The listed barn will provide excellent light with conservation-approved Velux windows and plenty of wall space to allow him to spread out and work on lots of paintings at once. He usually has 20 on the go at one time, at various stages of completion, and likes to move between paintings so that each remains fresh.

"It is partly practical and partly a question of concentration. Like so many artists find, you can overwork a picture. Each picture is so different. You might have an enormous struggle with one and spend many fruitless hours on it.

"You feel as if you are in a battle sometimes. Some painters say they enjoy that, but I prefer inspiration to flow rather than have to force it out."

Those familiar with Mike's work will appreciate his unique style, using printed matter to form collages over-painted in acrylics. The technique brings fun and spontaneity to his work and was originally a device to encourage his art students not to be daunted by a large blank canvas.

"My wife used to help at a local playgroup and brought home some tissue paper. It was one of the first materials I used."



So he will be collecting "a lot of rubbish" such as tissue, local newspapers, leaflets and tickets from the likes of Borough Market, Southwark; now a trendy wholesale market, but 25 years ago his favourite London haunt as a student, so he can use snippets of them to fit in with pictures for his exhibition.

Mike's plan for the Marine House exhibition, his major showing in 2008, is to revisit these old Central London haunts of markets and docks and contrast them with the more rural and coastal landscapes from the West Country.

"Markets were the first subject I ever did in mixed media. I found the printed matter useful to help describe price labels on fruit or indicate shop fronts. Texture interests me all the time and will come in a lot in my West Country coastal paintings. I can create texture using mostly paper but I am looking to extend that, whether to use sand from the beach or netting."

Other contrasts will come in the use of his tonal paint palettes, some colourful others monochromatic.

"I do go back to drawings and sketches I did many years ago but use them as a springboard. My work is not literally topographical. I've always been fascinated by dockyards for example, as I came from Dover and painted the docks there when I was younger."

"I am drawn to interpret structures and their connection with Man. The theme runs through my work, the way Man evolved with the landscape, I am trying to portray his role in it."

His uncanny feel for composition is truly recognised in his work, which transports the viewer to the scene with such details as telephone wires, old lights and drying washing.

Mike, now 50, remembers the "fateful" day he walked into Marine House at Beer six years ago. He has since become one of its most successful artists and he has built a national reputation for his unique style.

Now with the move to Combe Martin the Bernards hope to convert some of their stone barns into studios and accommodation to offer facilities to groups of artists wanting to stay and paint and perhaps find some inspiration from Mike as mentor.

Mike Bernard's solo show entitled 'West End to West Country' will be held between Saturday 20th September and Friday 4th October at Marine House at Beer.

STAY IN TOUCH! Have you moved or changed your e-mail address? Please let the gallery know by e-mail, phone or letter so that we can keep you informed, send new catalogues, invitations, etc.

POTTERY FOR ALL TASTES, TEN TO SAVOUR

Individual hand-crafted pottery appeals for all manner of reasons. For unique objects they are remarkably inexpensive considering the time and skill expended by the maker.

They range from the practical such as the work of Steve Harrison and Nick Hillyard (front page) or Jane Cox, to works of great invention such as the spectacular clocks of Ross Emerson, the intriguing figurative pieces of Amanda Popham and the gentle dragons of Karen Lainson.

Among over 35 potters represented at our galleries the pictures here and on the front page illustrate work by the ten consistently most successful and collectable makers.



Richard Godfrey



Laurel Keeley



Jane Cox



Ross Emerson



Amanda Popham



Karen Lainson



Katherine Lloyd



Mark Dally

WEB WATCH

www.marinehouseatbeer.co.uk

Keep an eye on our web site; more and more people are making buying decisions on the web. This is especially the case for our galleries amongst people who have visited us or who already own a painting or piece

of craftwork from one of our exhibitors.

The trend is increasing rapidly. We therefore ensure that the web site is up to date and presents work currently for sale. We also have a door-to-door courier

company who deliver large or fragile items at very reasonable cost.

TEMPT YOURSELF

So if you spot something you really like, but are nervous that you haven't seen it 'in the flesh'

let us put your mind at rest. If on delivery it does not meet your expectations you can return it, paying only the return courier or posting cost, whichever was the way it was sent to you. The risk is low! It has yet to happen.

GLASS, GLORIOUS GLASS

Over the years Steam Gallery has been building a reputation as a centre for fine glassware made by some of Britain's most recognised makers such as Peter Layton, Bob Crooks, Sue Parry, Siddy Langley and Ed and Margaret Burke.

This year has seen the emergence of a new talent, Fran Staniland, a recent graduate from the National Glass Centre in Sunderland. This fine, modern work first shown at our stand at the London Affordable Art Fair has quickly built a following and new themes in her repertoire will be ready by the Spring for this year's fair in London.

Work by all these fine makers is always available and displayed on our web site.

*Fran Staniland, left
Peter Layton, right*



NEW ARRIVALS

Following another record year for the galleries we have selected three artists from the many who approach us and from those that we have researched. We believe they will be attractive to our customers and will compliment our current artists.

1. Ian Parker

Ian is a Cumbrian based still life artist of the highest calibre. We first saw his work at the Royal Academy 2007 Summer Show where, exceptionally, he had had three works accepted. His paintings are small scale and very fine, usually signed off with a droplet of water on a piece of the fruit. Painting prices are typically £1200 - £1500.

2. Christine Relton and Tom Marine

Unusually these Yorkshire based artists collaborate in painting their canvasses. Christine, a Fine Art graduate from Lancaster, and Tom, from Chelsea College of Art, believe that working together stops them getting stale or

precious about their work. Their representational work explores themes of place and memory with evocative interpretations of Pennine scenery. Their paintings command prices between £1500 and £3500.

3. Sue Verity

Midlands-based artist Sue Verity is building a reputation for bold close up interpretations of well known personalities. These strong facial images on canvas depict people such as Marilyn Monroe and Johnny Depp. She is currently painting a series of contemporary personalities in her fresh, modern style. These works typically sell for between £400 - £500.

4. Eleanor Bartleman

Eleanor produces porcelain sculptural objects of intrigue inspired by the epic story of Reynard the Fox. Here the animal takes on human characteristics, moods and attitudes; lover, parent, child and stranger for example. These are dream like works with a slight edge.



FATHER & SON

David Farrant has a long established reputation for fine figurative canvasses. His large paintings convey his fine, bold brush technique and sense of composition. Little surprise, therefore, that his work commands prices often exceeding five figures.

It must be satisfying to him that his son Jim Farrant is now emulating his success. Initially Jim's focus was

figurative, particularly observed people in street scenes, but painted with a much tighter style than his father. This year, however, he has turned his attention to bold Devon landscapes and powerfully lit still lifes. Shown at Marine House and by us at the Affordable Art Fairs, these have proved a sell-out.

New works by both artists are available at Marine House.



Jim Farrant, The View, 27 x 21 inches, oil on board



David Farrant, Jackie's New Hat, 39 x 36 inches, oil on canvas

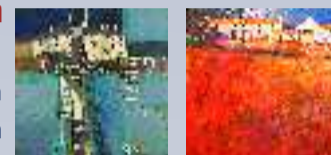
2008 SHOWS & EXHIBITIONS

Wednesday 12 March to Sunday 16 March. Affordable Art Fair, Battersea, London

Artists include Michael Morgan, John Piper, Ian Elliot, Hugh Sean O'Rourke, Andrew Coates, Tony Williams, Robert Freame, Peter Barker, Fran Staniland and Meg McCarthy. Contact the galleries for invitations to the private view or half price general tickets.

Saturday 29 March to Friday 11 April. Martin Procter & John Piper Exhibition

Martin shows a series of works from Dartmoor to the Estuary of the Dart. John presents innovation in his iconic studies of West Cornwall.

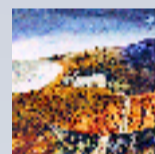


Thursday 15 May to Sunday 18 May Affordable Art Fair, Temple Meads, Bristol

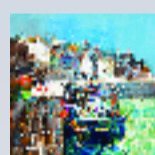
Artists will include Michael Morgan, Mike Bernard, John Hammond, Tina Stokes, John Piper, Tina Morgan, Mary Pym and Peter Layton. Contact the galleries for invitations to the private view and half price general tickets

Saturday 28 June to Friday 11 July Michael Morgan RI solo show

40 new works by this celebrated artist



Saturday 20 September to Friday 3 October. Mike Bernard RI solo show 'West End to West Country'



Wednesday 15 October to Sunday 19 October. Affordable Art Fair, Battersea, London

New work by Mike Bernard, John Hammond, Tina Stokes, Jim Farrant, John Harlow, David Eustace, Martin Procter, Tina Morgan, Mary Pym, Peter Layton. Contact the galleries for private view invites and half price general tickets.

Saturday 25 October to Friday 7 November. Joint exhibition by Mary Pym and Peter Barker

Contrasting styles by two leading landscape artists.



Published by Marine House at Beer, Fore Street, Beer, Devon, EX12 3EF, UK

t • +44 (0)1297 625257

f • +44 (0)1297 625493

e • info@marinehouseatbeer.co.uk

w • www.marinehouseatbeer.co.uk

©2008 Marine House at Beer

and the artists whose work is represented here